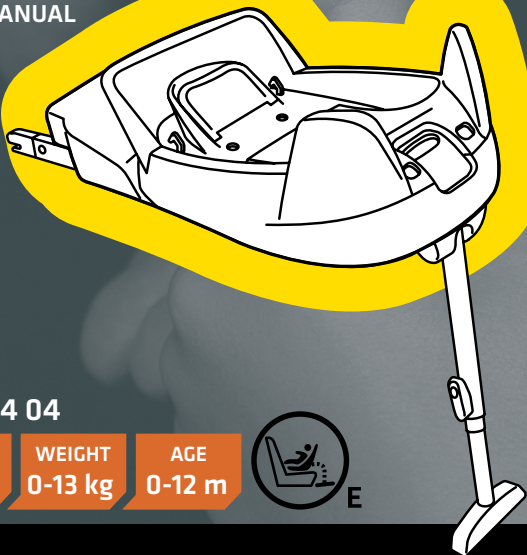




izi Go Isofix™

REARWARD-FACING

USER MANUAL



ECE R44 04

GROUP
0+

WEIGHT
0-13 kg

AGE
0-12 m



BeSafe®

Thank you for choosing BeSafe iZi Go ISOfix

BeSafe has developed this seat with much care, to protect your child during the first phase of her or his life.

! It is important that you read this user manual BEFORE installing your seat. Incorrect installation could endanger your child.

Contents

| | |
|---------------------------|----|
| Vital information | 3 |
| Preparing to install | 4 |
| iZi Go ISOfix usage | 5 |
| ISOfix installation | 6 |
| Removing iZi Go ISOfix | 10 |
| Warning: potential misuse | 12 |
| Important advice | 14 |
| Point of sale information | 15 |
| Guarantee | 16 |

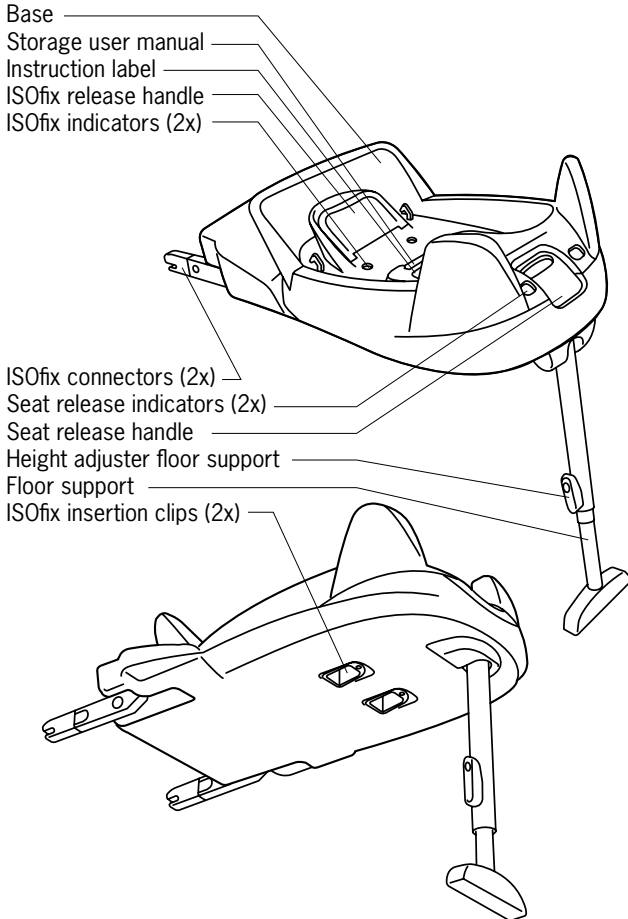
Vital information



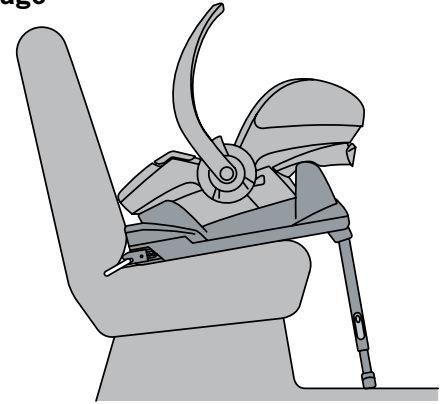
- It is **NOT ALLOWED** to mount the seat in a front passenger seat **WITH AN ACTIVATED AIRBAG**.
- iZi Go ISOfix can only be installed rearward-facing with the ISOfix anchorage in a car equipped with ISOfix anchorage points.
- iZi Go ISOfix is approved in group 0+, rearward-facing from 0-13 kg.
- The floor support must always be used. Make sure that the floor support is fully pushed down.
- The child must always be secured with the internal harness straps when seated in the child seat. The same applies to carrying the seat and when using in combination with a stroller.
- When installed with ISOfix: Make sure the indicators are green before you drive.
- When the child weighs over 13 kg or the shoulder height grows above the highest position of the shoulder straps, the child must change to a group 1 seat.
- After an accident, the seat must be replaced. Although it may look undamaged, if you were to have another accident, the seat may not be able to protect your child as well as it should.

Preparing to install

Crucial parts



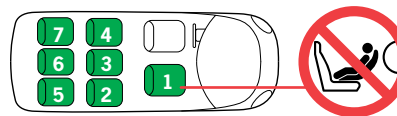
iZi Go ISOfix usage



- Check the car manufacturers handbook for detailed information on ISOfix.
- Without the ISOfix base the iZi Go can be installed with the car belt.

Positioning in car

- The iZi Go ISOfix is suitable for fixing into the seat positions of the cars listed in the car list.



Rearward facing installation

- Only rearward facing installation allowed

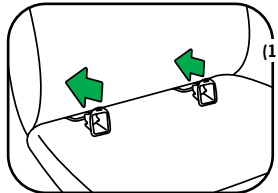
ISOfix installation

!

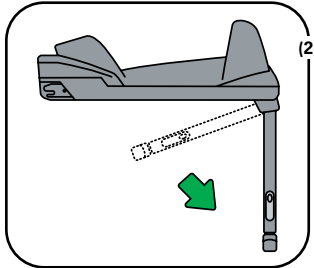
- It is NOT ALLOWED to mount the seat in a front passenger seat WITH AN ACTIVATED AIRBAG.
- When installed with ISOfix: Make sure the indicators are green before you drive.
- The floor support must always be used. Make sure that the floor support is fully pushed down.



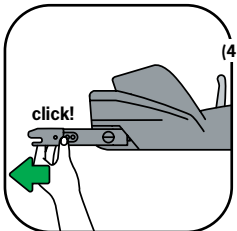
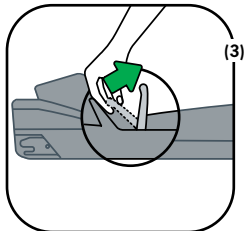
- 1- The insertion clips make the installation easier. Click the insertion clips onto the ISOfix anchorage points on the vehicle seat (between seat and backrest) (1). The insertion clips should be removed when not in use.



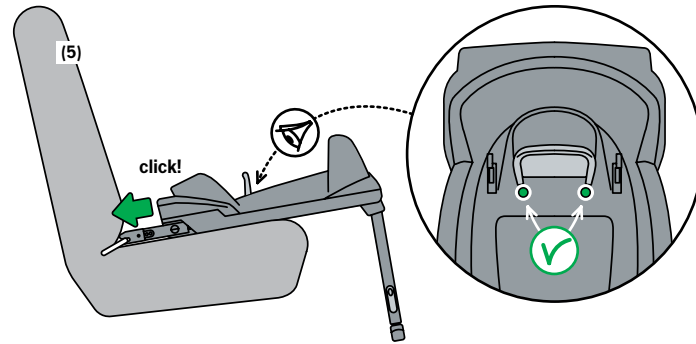
- 2- Release the floor support from underneath the base. Do this outside the car (2).



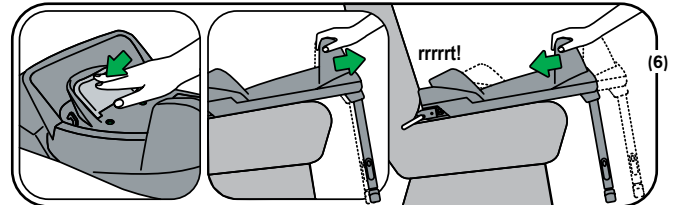
- 3- Pull the ISOfix release handle to a vertical position (3). Slide the ISOfix connectors out of the base till the end stop (4).



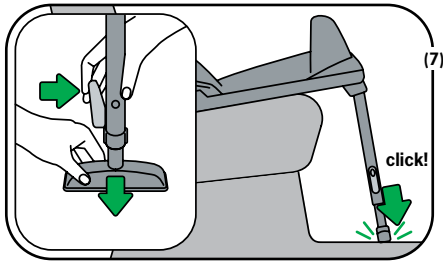
- 4- Position the base on the car seat. Click the ISOfix connectors in the ISOfix points on the vehicle seat. Make sure that both ISOfix indicators are green (5).



- 5- Push the ISOfix release handle down in the base. Push the ISOfix base as far as possible towards the backrest of the vehicle seat (6).



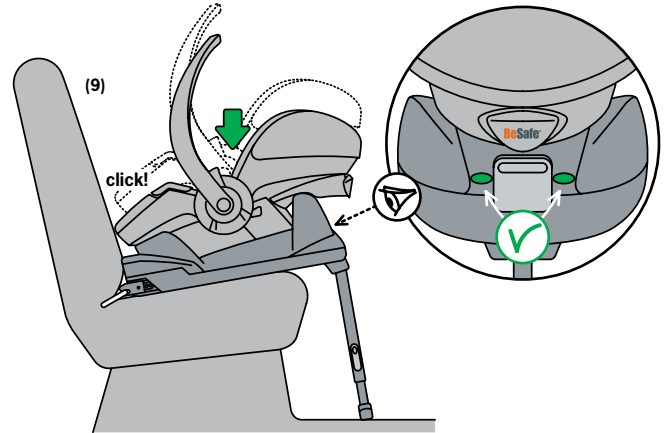
- 6- Unlock the height adjuster floor support and push the floor support down till it's in contact with the floor of the car (7).



- 7- Always check if the ISOfix indicators are green, before positioning the seat on the base (8).



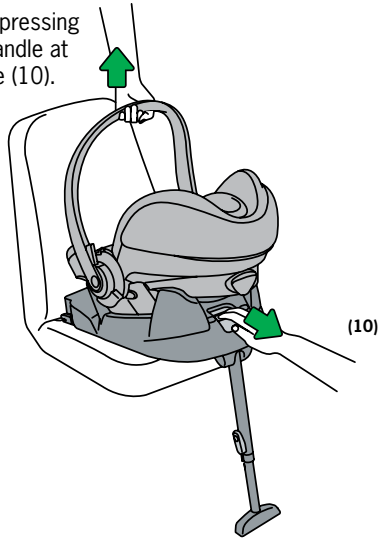
- 8- Position the iZi Go on the base. Check if the seat is fixed to the base and if the seat release indicators of the release handle indicate green (9). If the indicators do not indicate green, check if the seat is fixed in the right way.



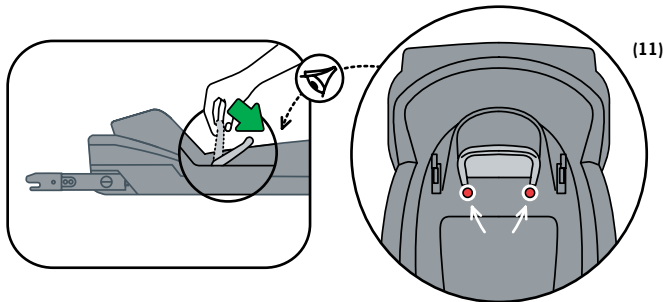
- Leave the carrying handle of the seat in the vertical position carrying position while driving.

Removing iZi Go ISOfix

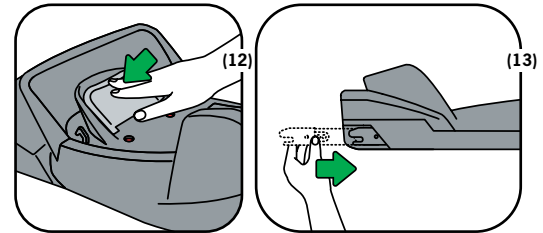
- 1- Remove the iZi Go while pressing down the seat release handle at the front side of the base (10).



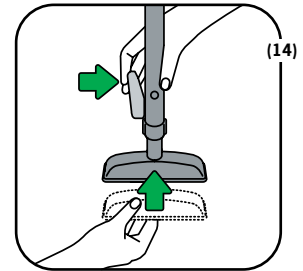
- 2- To release the ISOfix anchorages, pull the ISOfix release handle backwards totally. After release the indicators should show a red indication (11).



- 3- Push the ISOfix release handle down (12). Push the ISOfix anchorages totally inside the base (13).

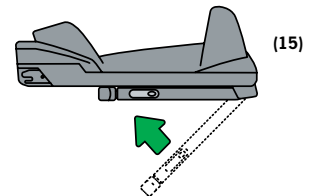


- 4- Unlock the height adjuster of the floor support and push the floor support fully up (14).



- 5- Take the iZi Go ISOfix base out of the car.

- 6- Store the floor support underneath the base (15).



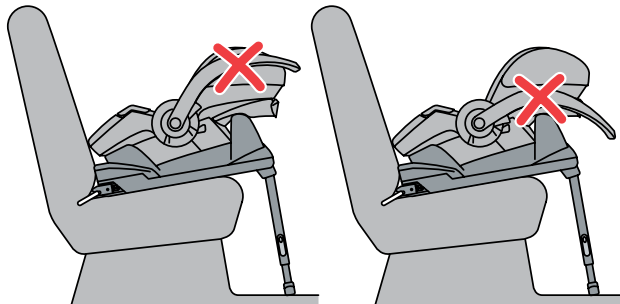
- 7- Remove the ISOfix insertion clips from the vehicle seat and store them underneath the base.

Warning: potential misuse

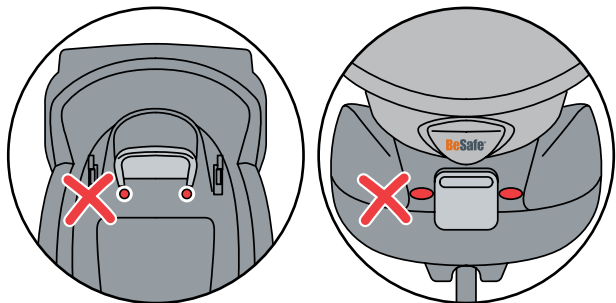
- ! • It is NOT ALLOWED to mount the seat in a front passenger seat WITH AN ACTIVATED AIRBAG.



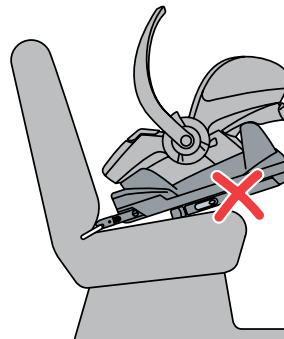
- ! • DO NOT use the iZi Go with the carrying handle in a folded down position while driving.



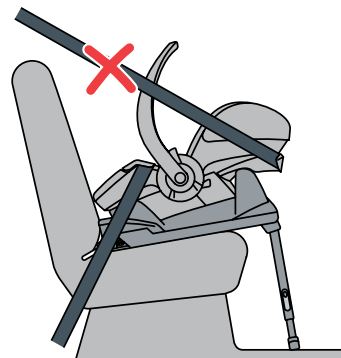
- ! • DO NOT drive with the iZi Go when any indicator is red.



- ! • DO NOT use the seat with folded floor support.



- ! • DO NOT use the car belt in combination with iZi Go ISOfix base.



Important advice

!

- DO NOT attempt to dismantle, modify or add any part to the seat. Warranty will expire if non-original parts or accessories are used.
- DO NOT use anything, such as a cushion, to raise the child seat off the passenger seat of the vehicle. In an accident the seat will not be able to protect your child in the right way.
- Never leave your child unattended in the seat.
- Make sure all passengers are informed about how to release your child in case of emergency.
- An unoccupied child seat should always be fastened in the vehicle.
- Make sure luggage or other objects are properly secured. Unsecured luggage may cause severe injuries to children and adults in case of accidents.
- Never use the seat without the cover. The cover is a safety feature and may only be replaced by an original BeSafe cover.
- Under the cover we use EPS foam. Do not push or pull too hard against the foam, since you might damage the foam.
- Do not use any aggressive cleaning products; these may harm the construction material of the seat.
- BeSafe advises that child seats should not be bought or sold second-hand.
- KEEP this user manual for later use with the seat.
- DO NOT use the seat for longer than 5 years. Due to ageing, the quality of the material may change.
- DO NOT use at home on a table or worktop, as long as your child is seated in the seat.
- When installed with ISOfix: Check the manufacturer's vehicle handbook.

Practical advice

When the child seat is mounted in the car check all the areas where the child seat might touch the interior. We recommend using a (BeSafe) protection cover in these places to avoid cuts, marks or discolouration on the interior of the vehicle, especially in vehicles with leather or wooden interior.

Point of sale information

Notice for ISOfix installation

- This is a semi-universal ISOfix Child Restraint System. It is approved to regulation No. 44.04, series of amendments for general use in vehicles fitted with ISOfix anchorage systems.
- It will fit cars with positions approved as ISOfix positions (as detailed in the vehicle handbook), depending on category of the child seat and of the fixture.
- The mass group and the ISOfix size class for which this device is intended is: E.
- The seat is suitable for fixing into the seat positions of the vehicles listed in the separate 'car list'. Seat positions in other vehicles may also be suitable to accept this child restraint. If in doubt, consult either the child restraint manufacturer or the retailer. For updated car list see: www.besafe.eu.

Next car seat

- BeSafe offers several car seats suitable as from 9 kg. For updated car seat program see www.besafe.eu

Guarantee

- All BeSafe products are carefully designed, manufactured and tested. All of our BeSafe child seats are tested periodically out of our continuous production in our test laboratory. Furthermore they are tested by independent test institutes.
- Should this product prove faulty within 24 months of purchase due to materials or manufacturing fault, except covers and harness straps, please return it to the original place of purchase.
- The guarantee is only valid when you use your seat appropriately and with care. Please contact your dealer, he will decide if the seat will be returned to the manufacturer for repair. Replacement or return cannot be claimed. The guarantee does not get extended through repair.
- The guarantee expires: when there is no receipt, when defects are caused by wrong and improper use, when defects are caused by abuse, misuse or negligence.



HTS BeSafe as
N-3535 Krøderen, Norway - www.besafe.eu

